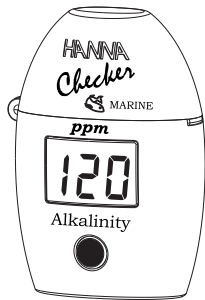


HI 755

Marine Alkalinity



Dear Customer,

Thank you for choosing a Hanna Instruments Product.

Please read this instruction manual carefully before using the instrument. If you need additional technical information, do not hesitate to e-mail us at tech@hannainst.com.

Preliminary examination:

Please examine this product carefully. Make sure that the instrument is not damaged. If any damage occurred during shipment, please notify your Dealer.

Each HI 755 meter is supplied complete with:

- Two Sample Cuvettes and Caps
- 1 bottle of Alkalinity Liquid Reagent
- 1 mL syringe with tip
- 1 x 1.5V AAA Battery
- Instruction Manual

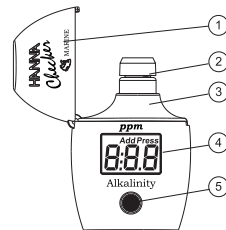


For more details about spare parts and accessories see "Accessories".

Technical specifications:

Range	0 to 300 ppm
Resolution	1 ppm
Accuracy	±5% of reading ±5 ppm @ 25°C
Typical EMC Dev.	±1 ppm
Light Source	Light Emitting Diode @ 610 nm
Light Detector	Silicon Photocell
Method	Colorimetric method. The reaction causes a distinctive range of colors from yellow to green to greenish blue to develop.
Environment	0 to 50°C (32 to 122°F); max 95% RH non-condensing
Battery Type	1 x 1.5V AAA
Auto-Shut off	After 10 minutes of non-use.
Dimensions	81.5 x 61 x 37.5 mm (3.2 x 2.4 x 1.5")
Weight	64 g (2.25 oz.).

Functional description:



1. Dust cover.
2. Cuvette with cap.
3. Cuvette holder.
4. Liquid Crystal Display.
5. Button

Errors and warnings:



Light High: There is too much light to perform a measurement. Please check the preparation of the zero cuvette.



Light Low: There is not enough light to perform a measurement. Please check the preparation of the zero cuvette.



Inverted cuvettes: The sample and the zero cuvette are inverted.



Under range: A blinking "0" indicates that the sample absorbs less light than the zero reference. Check the procedure and make sure you use the same cuvette for reference (zero) and measurement.



Over Range: A flashing value of the maximum concentration indicates the reading is over range. Dilute the sample and re-run the test.



Battery low: The battery must be replaced soon.



Dead battery: This indicates that the battery is dead and must be replaced. Once this indication is displayed, normal operation of the instrument will be interrupted. Change the battery and restart the meter.



Measurement procedure:

- Turn the meter on by pressing the button, all segments will be displayed. When the display shows "Add", "C.1" with "Press" blinking, the meter is ready.



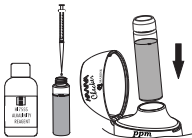
- Fill the cuvette with 10 mL of unreacted sample and replace the cap. Place the cuvette into the meter and close the meter's cap.



- Press the button. When the display shows "Add", "C.2" with "Press" blinking the meter is zeroed.

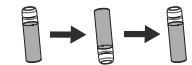


- Remove the cuvette, open it and using a 1 mL syringe carefully add exactly 1.00 mL of Alkalinity Reagent to the sample. Replace the cap and gently invert 5 times. Place the cuvette back into the meter.



Note: Pay attention not to spill reagent otherwise full color development may be inhibited.

- Press the button. The instrument directly displays the concentration of alkalinity in ppm of CaCO_3 . Alkalinity conversion:
1 ppm CaCO_3 = 0.02 meq/L
= 0.056 dKH



The meter automatically turns off after 10 minutes.

Tips for an accurate measurement

- It is important that the sample does not contain any debris.
- Whenever the cuvette is placed into the measurement cell, it must be dry outside, and completely free of fingerprints, oil or dirt. Wipe it thoroughly with HI 731318 or a lint-free cloth prior to insertion.
- Shaking the cuvette can generate bubbles, causing higher readings. To obtain accurate measurements, remove bubbles by swirling or by gently tapping the cuvette.
- Do not let the reacted sample stand for too long after reagent is added, as accuracy will be affected.
- After the reading it is important to discard the sample immediately, otherwise the glass might become permanently stained.

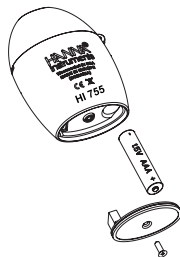
Battery management

To save the battery, the instrument shuts down after 10 minutes of non-use. One fresh battery lasts for a minimum of 5000 measurements. When the battery is dead the instrument will display "bAd" then "bAt" for 1 second and then turns off.

To restart the instrument, the battery must be replaced with a new one.

To replace the instrument's battery, follow the steps:

- Turn the instrument off by holding the button until the meter shuts off.
- Turn the instrument upside down and remove the battery cover with a screwdriver.
- Remove the battery from its location and replace it with a new one.
- Insert the battery cover and put back the screw with a screwdriver.



Accessories:

REAGENT SETS

HI 755-26 Liquid Reagents for 25 Alkalinity tests, 1 syringe and 1 tip

OTHER ACCESSORIES

HI 740142 1 mL graduated syringe
HI 740028 1.5V AAA batteries (4 pcs)
HI 731318 Cloth for wiping cuvettes (4 pcs)
HI 731321 Glass cuvettes (4 pcs)
HI 731225 Cuvette cap for checker HC (5 pcs)
HI 93703-50 Cuvette cleaning solution (230 mL).

Recommendations for Users

Before using these products, make sure that they are entirely suitable for your specific application and for the environment in where they are used.

Operation of these instruments may cause unacceptable interferences to other electronic equipments, thus requiring the operator to take all necessary steps to eliminate interferences.

Any variation introduced by the user to the supplied equipment may degrade the instrument's EMC performance.

To avoid damage or burns, do not put the instrument in the microwave oven. For your safety do not use or store the instrument in hazardous environments.

Hanna Instruments reserves the right to modify the design, construction and appearance of its products without advance notice.

For additional information, contact your dealer or the nearest Hanna Customer Service Center. To find the Hanna Office in your area, visit our web site

www.hannainst.com

HANNA
instruments